

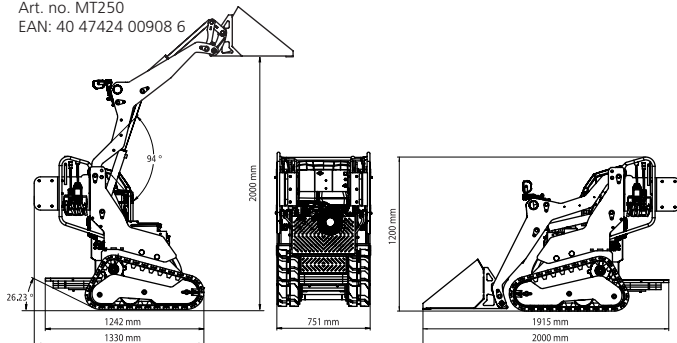
TECHNICAL DATA



MULTI TRUCK MT250

MULTI TRUCK MT250 with tracked chassis

Art. no. MT250
EAN: 40 47424 00908 6



GENERAL INFORMATION

Length (with loading bucket):	200 cm
Length (without loading bucket):	133 cm
Width:	75 cm
Height:	120 cm
Lifting height:	200 cm
Unloading height (with loading bucket):	173 cm
Ground clearance:	11,4 cm
Lateral safety distance:	6,2 cm
Weight (with loading bucket):	765 kg
Weight (without attachment):	730 kg
Rubber track width:	18 cm
Track width:	37 cm
Guaranteed sound power level L_{WA} :	101 dB(A)

ENGINE

Brand/Type:	TRIDENT TR306 EURO V petrol engine
Fuel:	Super 95 (=E5) unleaded
Tank Capacity:	6 litres
Engine power, max.:	6,3 kW at 3,600 min ⁻¹
Displacement:	306 cm ³
Start system:	Electric starter (12 volt) with ignition key
Max. torque:	18.5 N·m
Cooling system:	Air cooling
Max. angle of inclination:	25°

HYDRAULIC SYSTEM

Double pump capacity:	2 x 15 l/min
Pump pressure, max.:	17.5 MPa
Tank capacity:	29 litres (HLP 32)

PERFORMANCE

Operating capacity (with loading bucket):	200 kg = 35% of the tilting capacity
Tilting capacity (with loading bucket):	572 kg
Driving speed (forwards/backwards):	up to 2.3 km/h
Ground pressure:	32.0 kPa (0.33 kgf/cm ²)

LUMAG GmbH

Rudolf-Diesel-Straße 1a
D-84375 Kirchdorf am Inn
Tel.: +49 8571/92556-0
Fax: +49 8571/92556-19

info@lumag-maschinen.de
www.lumag-maschinen.de

incl. 80-litre
loading bucket



The compact multifunctional machine!

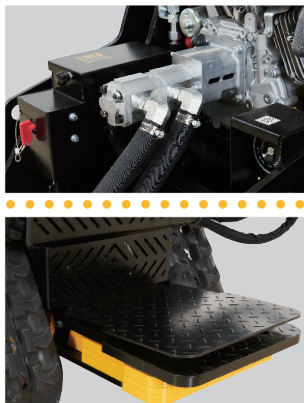
Your dealer





MT250

Power pack for every task. Unlimited flexibility.



The MULTI TRUCK MT250 is a compact and manoeuvrable helper for homeowners, tradesmen, landscaping, agriculture and other applications. Easy handling and flexible, precise operation make the MT250 a real all-rounder, even in the tightest of spaces. As a lightweight with compact dimensions, it can also be transported quickly and easily to the place of use.

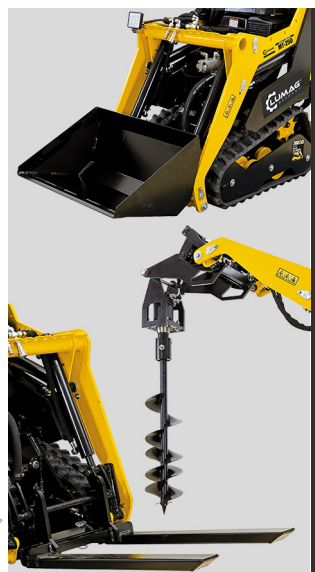
A wide range of attachments make the MT250 a versatile machine on the construction site. Quick coupling makes it possible!

Have fun with your MULTI TRUCK MT250 from LUMAG.



Standard features MULTI TRUCK MT250

- With quick-change device and 80-litres loading bucket
- Powerful double hydraulic pump
- Easy to manoeuvre – simple controls ensure intuitive operation
- Variable speed control (forwards/reverse)
- Powerful 6.3 kW petrol engine with electric starter
- Engine stop at low engine oil level
- Robust rubber track with chain tensioner
- LED work lights
- Operator platform with safety device
- Anchor points for lifting and lashing
- Versatile in use with a wide range of attachments



Loading bucket 5MT2501

The loading bucket is suitable for everyday use. The bucket has a height of 39 cm and a depth of 48 cm.
W/D/H: 735/480/390 mm
Capacity: 80 l (0.08 m³)
Weight: 35 kg

Auger, hydraulic 5MT2503

The auger is the ideal tool for drilling holes of up to 20 cm in diameter. This opens up numerous possible applications: Ground drilling for plants and piles or masts and for foundations or drainage shafts.
Bore screw: Ø 200 mm
Drilling depth: 800 mm
Rated speed: 50 min⁻¹
Torque: 350 Nm
Weight: 52 kg

Pallet fork 5MT2504

For lifting and moving of all types of pallets.
Overall dimensions (L/W/H): 103/550/289 mm
Fork dimensions (L/W/H): 800/80/40 mm
Load capacity of forks per pair: 150 kg
Weight: 28.5 kg



Trailer coupling 5MT2502

The adapter plate with screwed-on ball head enables attachment of a trailer coupling to the MT250. The article is not approved for public roads.

Ball head: Ø 50 mm
Trailer load: 750 kg
Vertical load: 3,500 kg
Weight: 13 kg

Side-tilting bucket 5MT2505

The side-tilting bucket makes it easy to unload material from the side in the tightest of spaces. The bucket section can be hydraulically lifted by 80° to the right.

Working width: 1029 mm
Opening dimension/depth: 568 mm
Capacity: 130 litres
Tilting direction to the right in direction of travel (80°)
With discharge chute (approx. 1 metre wide)
Weight: 107 kg

Grab 5MT2506

Ideal tool for picking up and loading bulky goods or wood. Thanks to the recessed side sections, even medium-sized tree trunks can be optimally picked up crosswise.

Width: 750 mm
Capacity: 80 l (0.08 m³)
Weight: 79 kg

Dozer blade 5MT2507

Suitable for simple levelling and pushing work. On level ground, snow can also be pushed when the snow depth is low.

Standard working width: 800 mm
Working width with extension: 1600 mm
Height: 395 mm
Hydraulic swivelling device
Swivelling range: ±36,5°
Weight: 88 kg